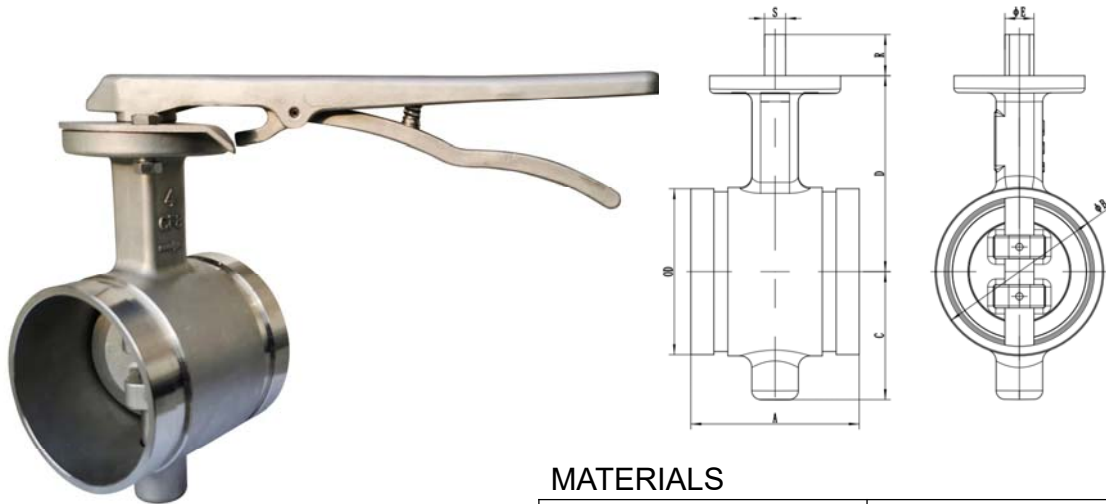


- Design and Manufacture Conform to AWWA C504
- Groove dimensions Conform to AWWA C606
- Face to Face dimensions Conform to MSS-SP70
- Testing Conform to AWWA C504/EN593
- Working Pressure 300PSI



MATERIALS

PART NAME	MATERIAL
BODY	CF8/CF8M/CF3/CF3M
DISC	CF8/CF8M/CF3/CF3M
STEM	SS431/SS304/SS316/SS420
HOUSING	ASTM A536 65-45-12
HANDWHEEL(OPTIONAL)	CF8/CF8M/CF3/CF3M

DIMENSIONS(mm)

DN	OD	A	B	C	D	E	S	R
65	73	96.8	75.1	57	108	12	9	28.5
65	76.1	96.8	75.1	57	108	12	9	28.5
80	88.9	96.8	90.2	70	115	16	12.5	28.5
100	114.3	115.8	116	88	135	20	14.5	28.5
125	139.7	147.6	141.3	100	150	24	16.5	28.5
125	141.3	147.6	141.3	100	150	24	16.5	28.5
150	165.1	147.6	168.3	118	165	24	16.5	28.5
150	168.3	147.6	168.3	118	165	24	16.5	28.5
200	216.3	133.4	219.1	148	190	28	20.5	30.5
200	219.1	133.4	219.1	148	190	28	20.5	30.5

Resilient-Seated SS Check Valve(Grooved End)

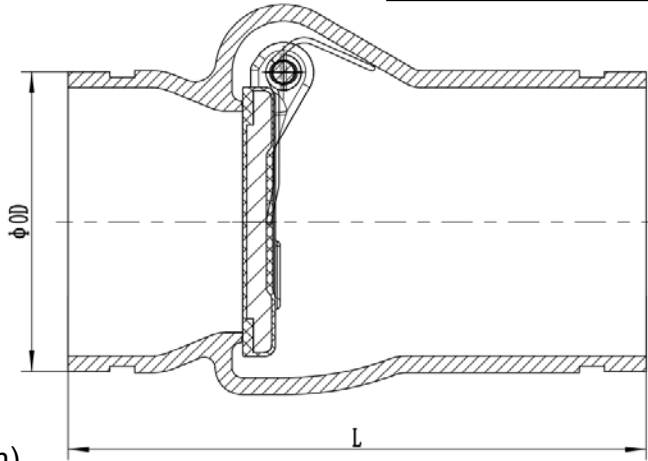
Check Valves



- Design and Manufacture Conform to AWWA/BS
- Groove dimensions Conform to AWWA C606
- Testing Conform to AWWA C508
- Working Pressure 300PSI

MATERIALS

PART NAME	MATERIAL
BODY	CF8/CF8M/CF3/CF3M
DISC	CF8/CF8M/CF3/CF3M+EPDM
HINGE PIN	SS431/SS304/SS316/SS420

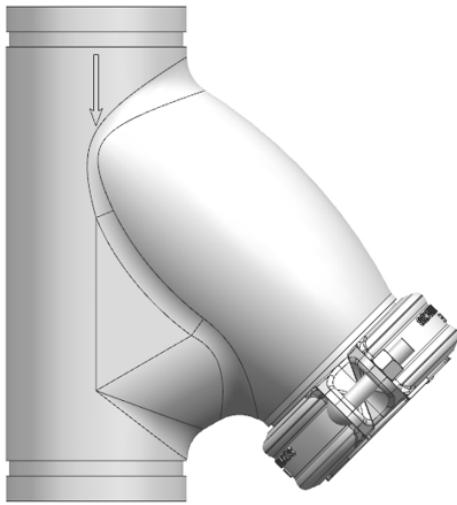


DIMENSIONS(mm)

NPS	DN	L	OD	A	B
1.5	40	148	48.3	15.88	7.93
2	50	159	60.3	15.88	7.93
2.5	65	170	73.0/76.1	15.88	7.93
3	80	184	88.9	15.88	7.93
4	100	220	114.3	15.88	9.53
5	125	250	139.7/141.3	15.88	9.53
6	150	273	165.1/168.3	15.88	9.53
8	200	330	216.3/219.1	19.05	11.13
10	250	435	273	19.05	12.7
12	300	510	323.9	19.05	12.7

SS Y Strainer (Grooved End)

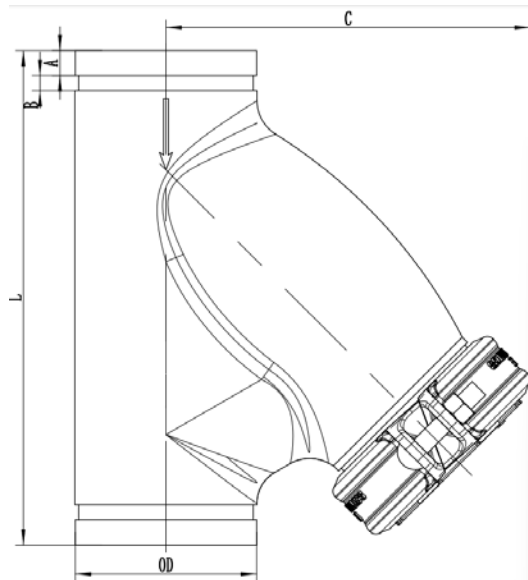
Y Strainer



- Design and Manufacture Conform to AWWA/BS
- Groove dimensions Conform to AWWA C606
- Working Pressure 300PSI

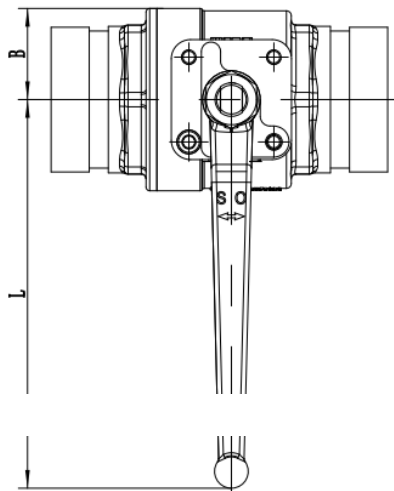
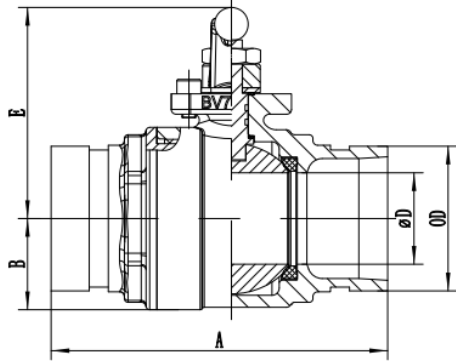
MATERIALS

PART NAME	MATERIAL
BODY/COUPLING/END CAP	CF8/CF8M/CF3/CF3M
BASKET	CF8/CF8M/CF3/CF3M
GASKET	EPDM/NBR/FKM



DIMENSIONS(mm)

NPS	DN	L	OD	A	B	C
2	50	198	60.3	15.88	7.93	146
2.5	65	225	73.0/76.1	15.88	7.93	168
3	80	249	88.9	15.88	7.93	188
4	100	312	114.3	15.88	9.53	230
5	125	355	139.7/141.3	15.88	9.53	264
6	150	415	165.1/168.3	15.88	9.53	305



- Groove dimensions Conform to AWWA C606
- Working Pressure 300PSI



MATERIALS

PART NAME	MATERIAL
BODY	CF8/CF8M/CF3/CF3M
BALL	CF8/CF8M/CF3/CF3M
STEM	SS431/SS304/SS316/SS420
SEAT	PTFE/RPTFE
HANDWHEEL(OPTIONAL)	CF8/CF8M/CF3/CF3M

DIMENSIONS(mm)

NPS	DN	OD	ϕ D	A	B	E	L
1.5	40	48.3	32	130	65	83	162
2	50	60.3	38.1	140	76	88	162
2.5	65	73	50.8	159	95.8	107	243
2.5	65	76.1	50.8	159	95.8	107	243
3	80	88.9	63.5	167	116.8	117.5	243
4	100	114.3	76.2	211	136.8	139	370