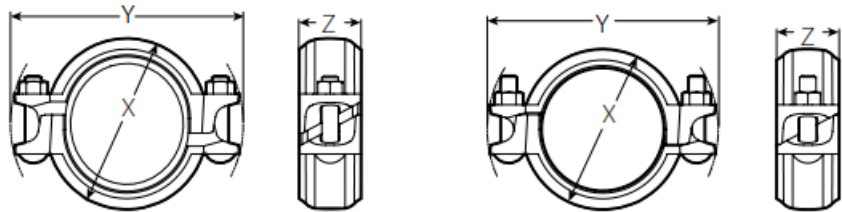


Model FA-1 Stainless Steel Quick Rigid Coupling

The Model FA-1 is a tongue and groove quick rigid coupling designed to provide a rigid joint for stainless steel pipe. The Model FA-1 is supplied standard in CF8 (304) and CF8M (316) with 304 /316/201 bolts and nuts. The bolts must be fastened to the required torque for proper installation.



Pre-Assembled

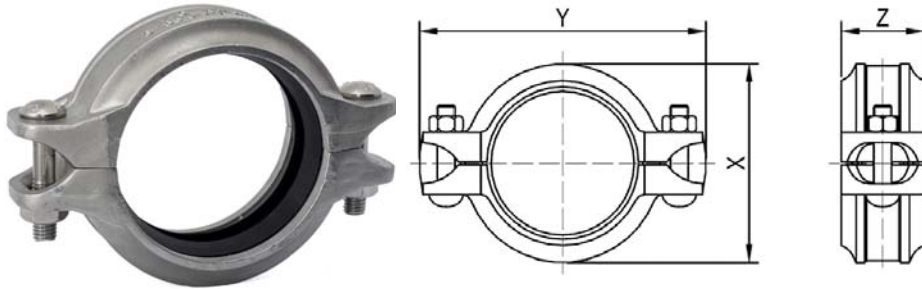
Joint Assembled

DIMENSIONS(mm)

Nominal Size	Pipe O.D.	Max. Working Pressure	Pre-Assembled Dimensions			Joint Assembled Dimensions			Bolt	
			X	Y	Z	X	Y	Z	No.	Size
in mm	mm	PSI Bar	in mm	in mm	in mm	in mm	in mm	in mm		in mm
1-1/4 DN32	42.4	300 21	3.13 79	5.00 127	2.00 51	2.75 70	5.00 127	2.00 51	2	3/8×2-1/4" M10×55
1-1/2 DN40	48.3	300 21	3.38 86	5.13 130	2.00 51	3.00 76	5.13 130	2.00 51	2	3/8×2-1/4" M10×55
2 DN50	60.3	300 21	4.00 102	5.63 143	2.00 51	3.50 89	5.63 143	2.00 51	2	3/8×2-3/8" M10×60
2.5 DN65	73.0	300 21	4.50 114	6.00 152	2.00 51	4.00 102	6.13 156	2.00 51	2	3/8×2-3/8" M10×60
3OD DN65	76.1	300 21	4.63 118	6.00 152	2.00 51	4.13 105	6.13 156	2.00 51	2	3/8×2-3/8" M10×60
3 DN80	88.9	300 21	5.13 130	6.75 171	2.00 51	4.63 117	6.75 171	2.00 51	2	1/2×2-1/2" M12×65
4 DN100	114.3	300 21	6.00 152	7.88 200	2.13 54	5.63 143	7.50 191	2.13 54	2	1/2×2-3/4" M12×70
5-1/2OD DN125	139.7	300 21	6.88 175	9.25 235	2.25 57	6.75 171	9.13 232	2.25 57	2	1/2×3" M12×75
5 DN125	141.3	300 21	7.25 184	9.25 235	2.25 57	6.75 171	9.13 232	2.25 57	2	1/2×3" M12×75
6-1/2OD DN150	165.1	300 21	8.00 203	10.25 260	2.25 57	7.75 197	10.13 257	2.25 57	2	5/8×3-1/2" M16×90
6 DN150	168.3	300 21	8.38 213	10.38 264	2.25 57	7.88 200	10.13 257	2.25 57	2	5/8×3-1/2" M16×90
JIS8 DN200	216.3	300 21	10.74 273	13.23 336	2.50 64	10.12 257	13 330	2.50 64	2	5/8×3-1/2" M16×90
8 DN200	219.1	300 21	10.88 276	13.38 340	2.50 64	10.25 260	13.13 333	2.50 64	2	5/8×3-1/2" M16×90

Model HJ-1 Stainless Steel Rigid Coupling

The Model HJ-1 is a tongue and groove rigid coupling designed to provide a rigid joint for stainless steel pipe. The Model HJ-1 is supplied standard in CF8 (304) and CF8M (316) with 304 /316/201 bolts and nuts. The bolts must be fastened to the required torque for proper installation.

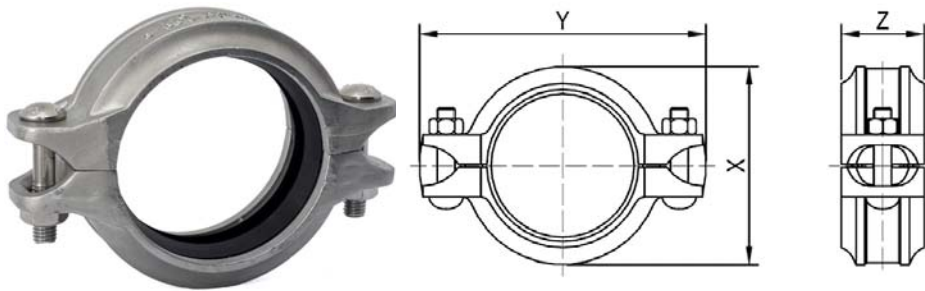


DIMENSIONS(mm)

Nominal Size	Pipe O.D.	Max. Working Pressure (CWP)	Axial Displacement	Dimensions			Bolt	
				X	Y	Z	No.	Size
in mm	mm	PSI Bar	in mm	in mm	in mm	in mm	No.	In mm
1-1/4 DN32	42.4	300 21	0-0.06 0-1.6	2.56 65	4.33 110	1.73 44	2	M10×50
1-1/2 DN40	48.3	300 21	0-0.06 0-1.6	2.80 71	4.45 113	1.73 44	2	M10×50
2 DN50	60.3	300 21	0-0.06 0-1.6	3.27 83	4.88 124	1.73 44	2	M10×50
2.5 DN65	73.0	300 21	0-0.06 0-1.6	3.86 98	5.39 137	1.73 44	2	M10×50
2.5 DN65	76.1	300 21	0-0.06 0-1.6	4.00 102	5.51 140	1.73 44	2	M10×50
3 DN80	88.9	300 21	0-0.06 0-1.6	4.50 114	5.94 151	1.73 44	2	M10×50
4 DN100	114.3	300 21	0-0.13 0-3.2	5.63 143	7.48 190	2.00 51	2	M12×60
5 DN125	139.7	300 21	0-0.13 0-3.2	6.77 172	8.98 228	2.00 51	2	M12×60
5 DN125	141.3	300 21	0-0.13 0-3.2	6.89 175	9.21 234	2.00 51	2	M12×60
6 DN150	165.1	300 21	0-0.13 0-3.2	7.68 195	10.04 255	2.09 53	2	M12×60
6 DN150	168.3	300 21	0-0.13 0-3.2	7.91 201	10.08 256	2.09 53	2	M12×60
8 DN200	216.3	300 21	0-0.13 0-3.2	10.12 257	13.62 346	2.44 62	2	M16×90
8 DN200	219.1	300 21	0-0.13 0-3.2	10.39 264	13.62 346	2.44 62	2	M16×90

Model HJ-2 Stainless Steel Flexible Coupling

The Model HJ-2 is designed for high pressure applications including reverse osmosis, desalination and other specialty systems. The HJ-2 is available in strong and anti-corrosive alloys of Duplex CD3MN (2205), Super Duplex CE8MN, CE3MN (2507) and 6-Moly stainless steel CK3MCuN (254SMO). The HJ-2 features 316 bolts, washers and Silicon Bronze nuts to help prevent galling during repetitive use. The bolts must be fastened to the required torque for proper installation.

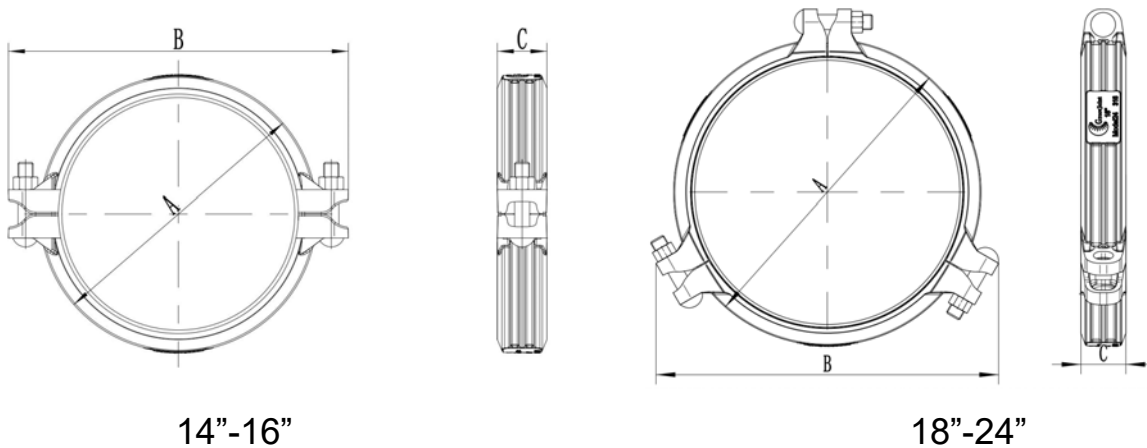


DIMENSIONS(mm)

Nominal Size	Pipe O.D.	Max. Working Pressure	Dimensions			Bolt	
			X	Y	Z	No.	Size
in mm	mm	PSI Bar	in mm	in mm	in mm	No.	mm
1-1/4 DN32	42.4	300 21	2.75 70	4.17 106	1.81 46	2	M10×50
1-1/2 DN40	48.3	300 21	2.99 76	4.45 113	1.81 46	2	M10×50
2 DN50	60.3	300 21	3.50 89	5.31 135	1.85 47	2	M10×50
2.5 DN65	73.0	300 21	4.00 102	6.04 153	1.91 49	2	M10×50
2.5 DN65	76.1	300 21	4.00 102	6.04 153	1.91 49	2	M10×50
3 DN80	88.9	300 21	4.69 119	6.61 168	1.85 49	2	M10×50
4 DN100	114.3	300 21	5.79 147	7.80 198	2.03 52	2	M12×60
6 DN150	165.1	300 21	7.95 202	10.71 272	2.05 52	2	M12×60
6 DN150	168.3	300 21	7.95 202	10.71 272	2.05 52	2	M12×60
8 DN200	219.1	300 21	10.23 260	14.13 359	2.44 62	2	M16×90

Model 24 Stainless Steel Rigid Coupling

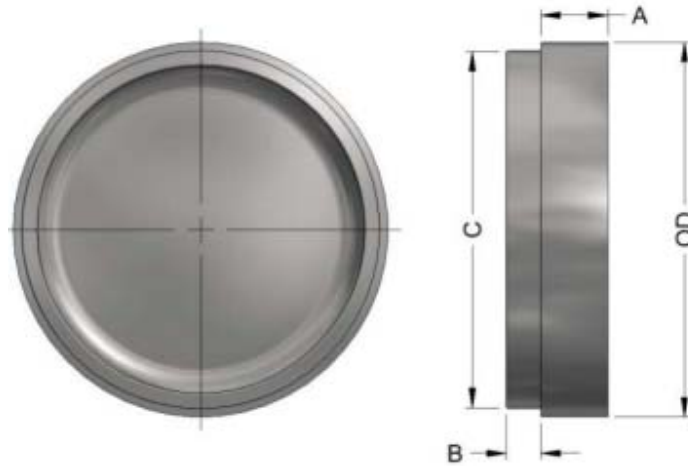
The Model 24 is a tongue and groove rigid coupling designed to provide a rigid joint for stainless steel pipe. The Model 24 is supplied standard in CF8 (304) and CF8M (316) with 304 /316/201 bolts and nuts. The bolts must be fastened to the required torque for proper installation.



DIMENSIONS(mm)

Nominal Size	Pipe O.D.	Max. Working Pressure (CWP)	Dimensions			Bolt	
			A	B	C	No.	Size
in mm	In mm	PSI Bar	in mm	in mm	in mm	No.	in
14 DN350	355.6	300 21	15.9 404	19.53 496	2.84 72	2	7/8×4.33
16 DN400	406.4	300 21	18.0 456.8	21.7 551	2.84 72	2	7/8×4.33
18 DN450	457.2	300 21	20 509	22.4 569	2.92 74.3	3	1×4.53
20 DN500	508.0	300 21	22.3 565.4	24.4 620	2.92 74.3	3	1×4.53
24 DN600	609.6	300 21	26.3 667.9	28.1 713.8	2.97 75.4	3	1×4.53

Model Caps Stainless Steel Grooved Cap



DUPLEX and SUPER DUPLEX STAINLESS STEEL END CAPS

Materials:

Duplex or Super Duplex stainless steel available both in CE8MN (UNS # J93345) and CE3MN (UNS # J93404) cast grades in accordance with ASTM A995/A995M.

Working Pressure¹:

Nominal size	Working Pressure
3/4" – 6"	1200 psi (82 bar)
8" – 12"	1000 psi (69 bar)*

316 STAINLESS STEEL END CAPS

Materials:

316 stainless steel with cast grade CF8M (UNS # J92900) conform to ASTM A351/A351M standard

Working Pressure¹:

Nominal size	Working Pressure
3/4" – 6"	600 psi (40 bar)
8" – 12"	400 psi (28 bar)*

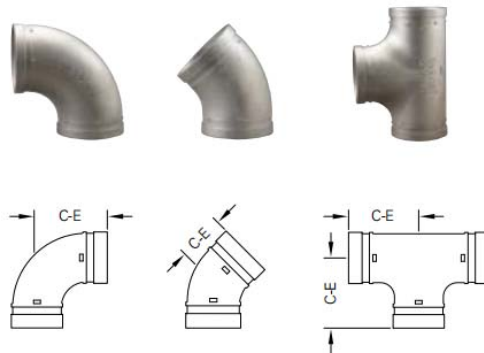
Nominal size (inch)	Dimensions inch (mm)				Approx. weight lb (kg)	Working pressure psi (bar)	
	OD	A	B	C		Duplex/SuperD.	316 SS
3/4	1.050 (26.67)	0.625 (15.88)	0.322 (8.18)	0.938 (23.83)	0.11 (0.05)	1200 (82)	600 (40)
1	1.315 (33.40)	0.625 (15.88)	0.322 (8.18)	1.190 (30.23)	0.17 (0.08)	1200 (82)	600 (40)
1-1/4	1.660 (42.16)	0.625 (15.88)	0.322 (8.18)	1.535 (38.99)	0.25 (0.11)	1200 (82)	600 (40)
1-1/2	1.900 (48.26)	0.625 (15.88)	0.322 (8.18)	1.775 (45.09)	0.32 (0.15)	1200 (82)	600 (40)
2	2.375 (60.33)	0.625 (15.88)	0.322 (8.18)	2.250 (57.15)	0.51 (0.23)	1200 (82)	600 (40)
2-1/2	2.875 (73.03)	0.625 (15.88)	0.322 (8.18)	2.720 (69.10)	0.82 (0.37)	1200 (82)	600 (40)
3	3.500 (88.90)	0.625 (15.88)	0.322 (8.18)	3.344 (84.94)	1.15 (0.52)	1200 (82)	600 (40)
4	4.500 (114.30)	0.625 (15.88)	0.385 (9.78)	4.334 (110.08)	2.44 (1.10)	1200 (82)	600 (40)
5	5.563 (141.30)	0.625 (15.88)	0.385 (9.78)	5.395 (137.03)	2.98 (1.35)	1200 (82)	600 (40)
6	6.625 (168.28)	0.625 (15.88)	0.385 (9.78)	6.455 (163.96)	4.36 (1.98)	1200 (82)	600 (40)
8	8.625 (219.08)	0.750 (19.05)	0.448 (11.38)	8.441 (214.40)	8.32 (3.77)	1000 (69)	400 (28)
10	10.750 (273.05)	0.750 (19.05)	0.500 (12.70)	10.562 (268.27)	13.89 (6.30)	1000 (69)	400 (28)
12	12.750 (323.85)	0.750 (19.05)	0.510 (13.00)	12.531 (318.29)	20.73 (9.40)	1000 (69)	400 (28)

Model 90S Stainless Steel 90° Grooved Elbow

Model 45S Stainless Steel 45° Grooved Elbow

Model TEES Stainless Steel Grooved Tee

The Model 90S, 45S, TEES stainless steel grooved fittings are investment cast in sizes 2" - 6". These fittings are supplied in ASTM A351 or A743 austenitic grades CF8 (304) and CF8M (316). The groove dimensions are machined after casting. All cast fittings feature full flow characteristics and are designed to the same C - E dimensions of standard ductile iron Grooved fittings.



DIMENSIONS(mm)

Nominal Size	Pipe O.D.	90S Grooved Elbow	45S Grooved Elbow	TEES Grooved Tee
		C-E	C-E	C-E
in mm	mm	mm	mm	mm
1-1/2 DN40	48.3	64	38	64
2 DN50	60.3	70	50	70
2.5 DN65	73.0	76	57	76
2.5 DN65	76.1	76	57	76
3 DN80	88.9	86	64	86
4 DN100	114.3	102	76	102
5 DN125	139.7	124	83	124
5 DN125	141.3	124	83	124
6 DN150	165.1	140	89	140
6 DN150	168.3	140	89	140